

# Trauma and Injury Intelligence Group Biannual Bulletin

Royal Blackburn Hospital Emergency Department and Urgent Care Centre,  
and Burnley General Hospital Urgent Care Centre  
October 2014 to September 2015

December 2015



Centre for Public Health,  
Faculty of Education, Health and Community,  
Liverpool John Moores University,  
Henry Cotton Campus,  
15-21 Webster Street,  
Liverpool, L3 2ET

[cph.org.uk](http://cph.org.uk)

0151 231 4500

[tiig@ljmu.ac.uk](mailto:tiig@ljmu.ac.uk)

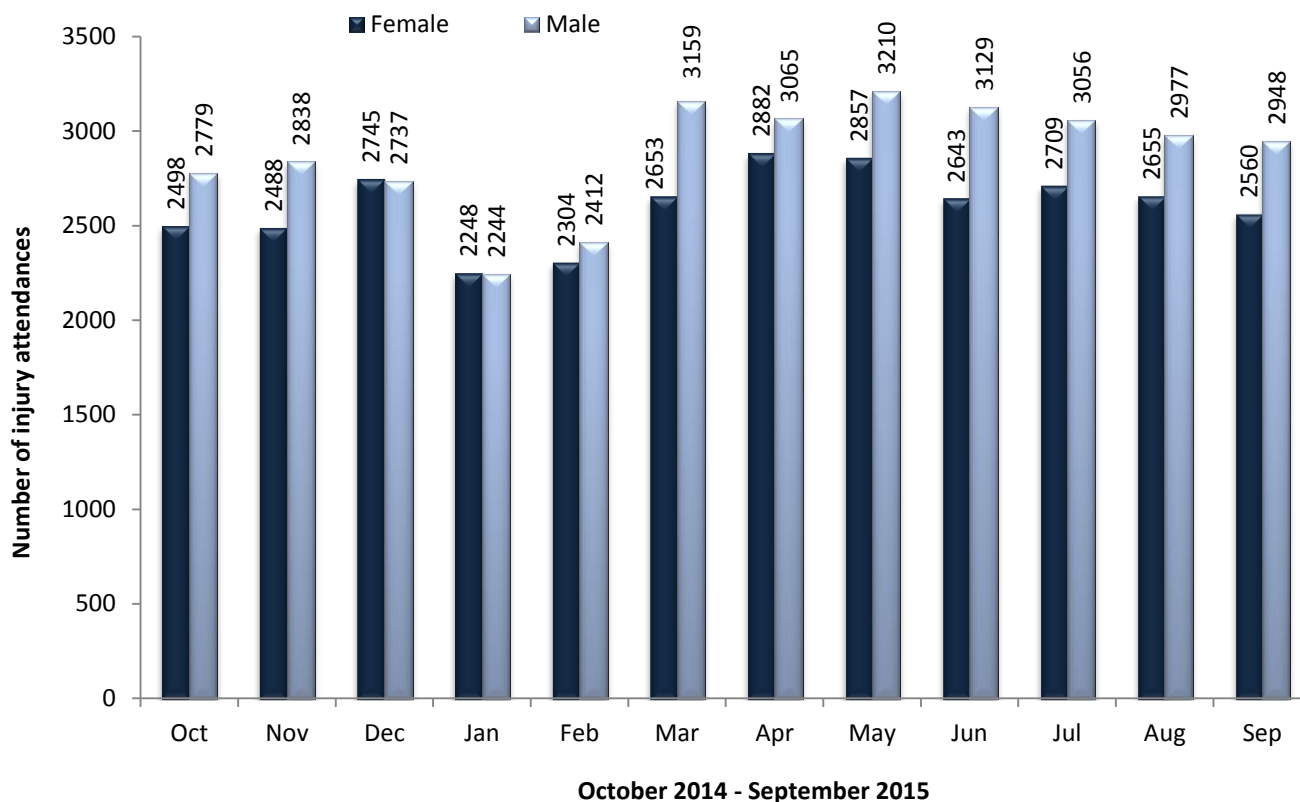
[tiig.info](http://tiig.info)

[twitter.com/tiig\\_cph](https://twitter.com/tiig_cph)

## ALL INJURY ATTENDANCES

This bulletin provides a breakdown of all injury attendances to Royal Blackburn Hospital Emergency Department (ED) and Urgent Care Centre (UCC), and Burnley General Hospital UCC between October 2014 and September 2015. In this twelve month period there were 65,796 ED and UCC presentations due to injury. The month with the highest number of attendances, calculated as a daily average, was April 2015 (198 per day) with January 2015 having the lowest attendances (145 per day). There were more male (n=34,554; 53%) than female injury attendances (figure 1).

**Figure 1: ED and UCC injury attendances by gender and month, October 2014 to September 2015**



Under a third (31%) were aged between 15 and 29 years (n=20,703) and just under a quarter (24%) aged between 30 and 59 years (n=15,956; figure 2).

**Figure 2: ED and UCC injury attendances by age group and month, October 2014 to September 2015**

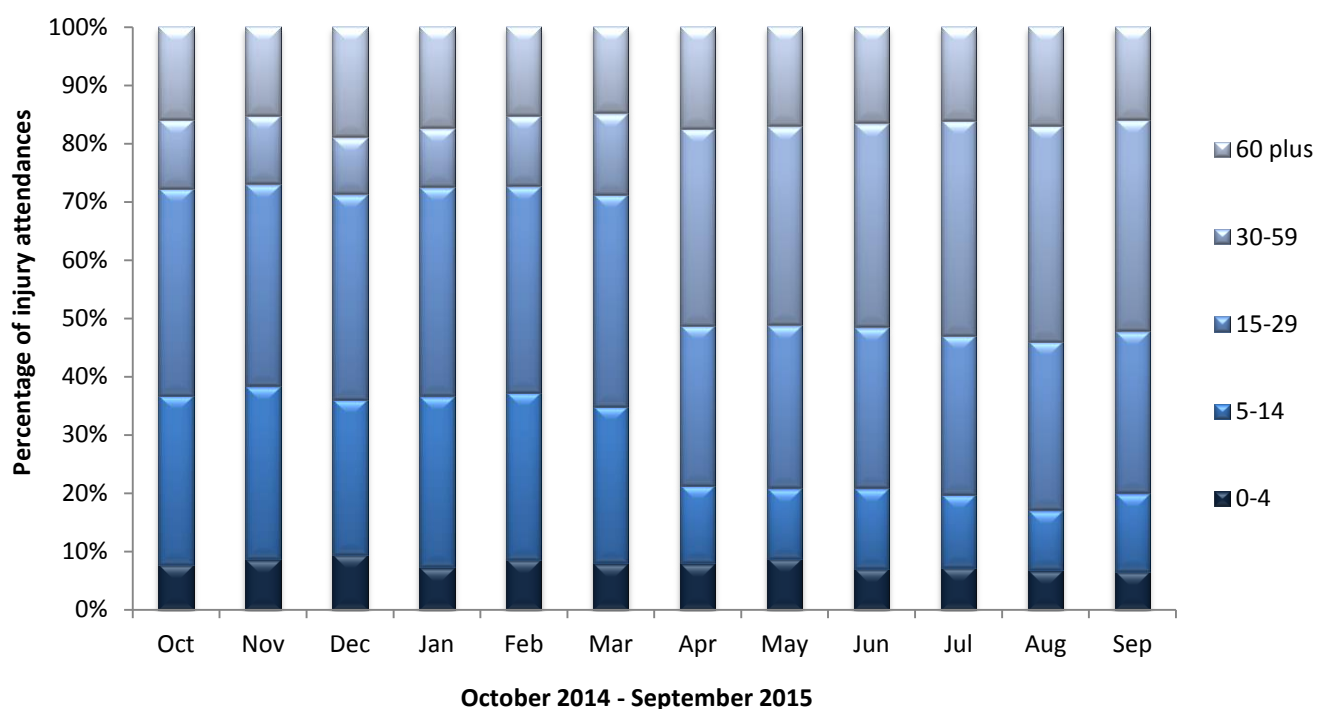


Table 1 displays ED and UCC attendances between October 2014 and September 2015 by injury group. The majority (n=57,743; 88%) were recorded as ‘other’ injuries followed by road traffic collisions (n=3,291) which accounted for 5% of injury attendances. Four per cent of all attendances were for sports injuries (n=2,859) and 3% were for assaults (n=1,690).

**Table 1: ED and UCC injury attendances by injury group and month, October 2014 to September 2015<sup>5</sup>**

Injury group	Oct	Nov	Dec	Jan	Feb	Mar	Apr	May	Jun	Jul	Aug	Sep	Total	%
<b>Other injury</b>	4593	4625	4908	3866	4070	5151	5261	5375	5066	5092	4944	4792	57743	88%
<b>Road traffic collision</b>	262	239	272	313	273	258	245	266	280	294	286	303	3291	5%
<b>Sports injury</b>	260	294	161	155	213	234	284	253	276	227	220	282	2859	4%
<b>Assault</b>	145	150	126	140	141	147	139	156	138	130	165	113	1690	3%
<b>Deliberate self-harm</b>	17	18	15	18	19	22	18	17	12	22	17	18	213	0%
<b>Total</b>	5277	5326	5482	4492	4716	5812	5947	6067	5772	5765	5632	5508	65796	100%

<sup>5</sup> Due to low numbers, firework injuries have been included in the ‘other’ injury category (n=10).

Table 2 shows the referral source to the ED and UCCs. Over a third (36%) of attendees were brought in by others (n=23,389), over a quarter (27%) were self-referred (n=17,663) and one in five (20%) were brought in by a parent (n=13,424).

**Table 2: ED and UCC injury attendances by referral source and month, October 2014 to September 2015<sup>1</sup>**

Referral source	Oct	Nov	Dec	Jan	Feb	Mar	Apr	May	Jun	Jul	Aug	Sep	Total	%
Brought in by others	1824	1874	2010	1787	1735	1998	1970	2047	2033	2113	2132	1866	23389	36%
Self-referral	1491	1421	1332	1082	1161	1546	1548	1719	1584	1546	1615	1618	17663	27%
Brought in by parent	1073	1087	1130	799	1004	1333	1357	1268	1213	1091	938	1131	13424	20%
Ambulance	707	717	806	628	610	695	821	812	694	775	718	679	8662	13%
GP request	40	44	37	44	44	63	44	44	55	67	42	45	569	1%
Other	49	46	27	40	42	28	74	40	41	33	27	32	479	1%
Police	30	27	51	27	26	44	40	31	38	26	30	22	392	1%
Sent by others	14	43	20	17	20	21	19	35	48	48	44	52	381	1%
ED staff	24	35	15	18	30	26	25	28	29	38	48	33	349	1%
Direct referral	14	11	25	26	22	34	26	20	16	13	20	10	237	0%
Emergency call	***	<10	17	16	15	13	14	10	9	<10	<10	13	134	0%
Staff health	<10	11	12	8	7	11	<10	13	10	7	7	7	108	0%
ED follow-up	0	0	0	0	0	0	0	0	***	***	***	0	<10	0%
Consultant	0	***	0	0	0	0	***	0	***	0	0	0	***	0%
<b>Total</b>	<b>5277</b>	<b>5326</b>	<b>5482</b>	<b>4492</b>	<b>4716</b>	<b>5812</b>	<b>5947</b>	<b>6067</b>	<b>5772</b>	<b>5765</b>	<b>5632</b>	<b>5508</b>	<b>65796</b>	<b>100%</b>

The discharge destinations for injury attendances are displayed in table 3. Over one third (35%) were discharged from hospital with no follow-up treatment required (n=22,816) and 16% were discharged to their General Practitioner (GP; n=10,473). Thirteen per cent of attendees were discharged to a GP within Burnley General Hospital (n=8,649) and 9% were referred to the fracture/orthopaedic clinic (n=5,815). Six per cent were discharged to a GP within Royal Blackburn Hospital (n=4,087) and 5% either left the ED/UCC before treatment (n=3,459) or were discharged to other clinics (n=2,981).

<sup>1</sup> Please note that all numbers less than five have been suppressed (\*\*\*) in line with patient confidentiality. If there is only one number less than five in a category then two numbers have been suppressed to prevent back calculations from totals.

**Table 3: ED and UCC injury attendances by discharge destination and month, October 2014 to September 2015<sup>1,2</sup>**

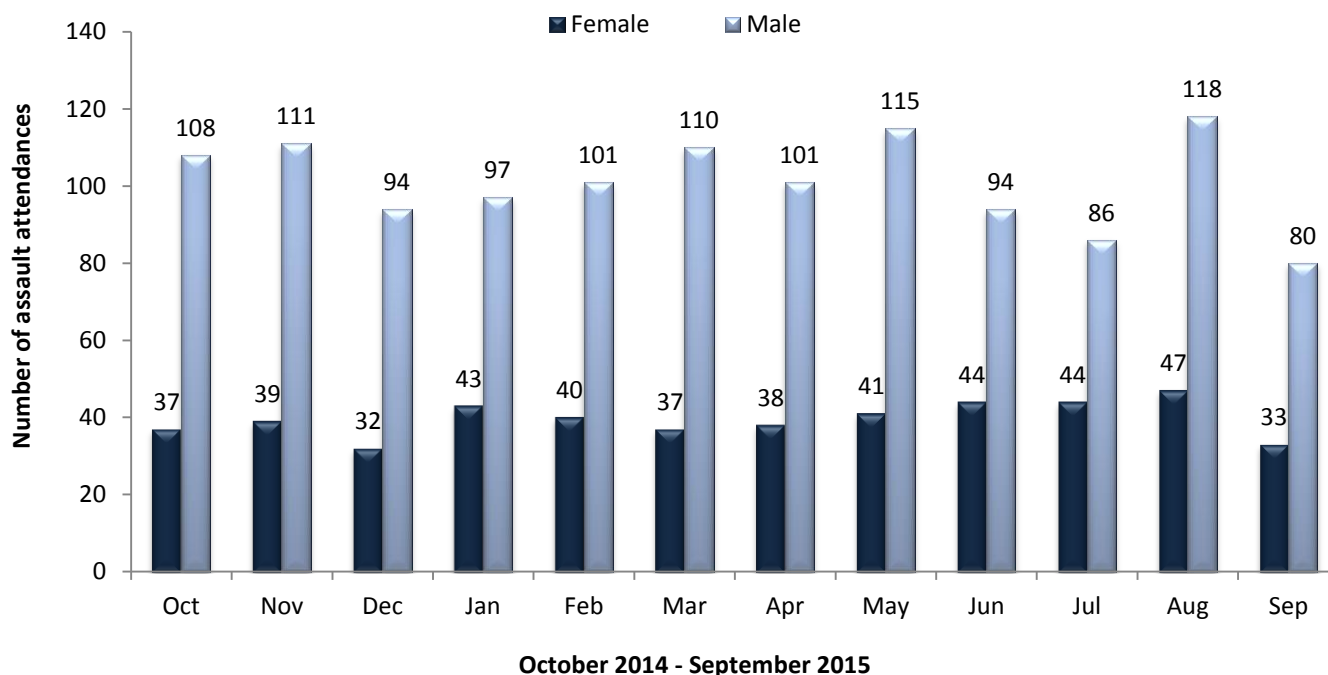
Discharge destination	Oct	Nov	Dec	Jan	Feb	Mar	Apr	May	Jun	Jul	Aug	Sep	Total	%
<b>Discharged - no follow-up</b>	1781	1748	1610	1615	1619	2130	2075	2077	2177	1956	2067	1961	22816	35%
<b>Discharged to GP</b>	876	721	793	664	776	915	996	978	886	986	895	987	10473	16%
<b>BGH discharge to GP within unit BGH</b>	701	786	875	619	637	795	786	846	614	704	680	606	8649	13%
<b>Clinic - fracture/orthopaedic</b>	449	464	437	432	434	473	498	515	545	520	550	498	5815	9%
<b>RBH discharge to GP within unit RBH</b>	360	498	509	297	379	300	323	380	303	289	206	243	4087	6%
<b>Left before treatment</b>	206	314	392	173	173	293	307	323	317	358	297	306	3459	5%
<b>Clinic - other</b>	259	228	255	220	219	268	217	247	278	251	241	298	2981	5%
<b>Admitted to ward</b>	244	252	263	179	143	201	262	290	200	198	198	218	2648	4%
<b>Cross site transfer</b>	125	70	77	82	133	167	144	134	144	133	166	134	1509	2%
<b>GP treatment room</b>	92	96	74	80	61	85	128	97	113	117	109	70	1122	2%
<b>Other</b>	38	47	63	39	30	57	50	42	66	82	62	65	641	1%
<b>Left refusing treatment</b>	44	37	60	23	25	25	47	39	54	59	74	29	516	1%
<b>Clinic - ophthalmology</b>	28	10	15	16	24	36	45	39	37	39	25	33	347	1%
<b>Other hospital</b>	26	20	35	25	28	30	26	22	7	37	30	31	317	0%
<b>Clinic - oral/dental surgery</b>	21	15	5	11	17	12	12	17	13	8	9	9	149	0%
<b>Community/district nurse</b>	7	***	7	5	8	11	10	8	6	5	10	***	80	0%
<b>ED dressing clinic</b>	10	***	6	7	***	6	11	***	***	***	***	10	72	0%
<b>Trauma clinic</b>	6	10	***	***	5	***	5	***	7	9	***	7	67	0%
<b>Died in department</b>	***	***	***	***	***	<10	***	5	***	6	***	***	29	0%
<b>Referral other health care professional</b>	***	***	0	0	0	0	0	0	***	***	***	0	11	0%
<b>Admitted to theatre</b>	***	***	0	0	***	0	***	***	0	0	0	0	<10	0%
<b>Unknown</b>	0	***	0	0	0	0	0	0	0	0	0	0	***	0%
<b>Total</b>	5277	5326	5482	4492	4716	5812	5947	6067	5772	5765	5632	5508	65796	100%

<sup>2</sup> BGH = Burnley General Hospital; RBH = Royal Blackburn Hospital. 'Clinic - other' includes: ENT clinic, GUM clinic, medicine and diabetic clinic, dermatology/plastic surgery clinic and A&E clinic. 'Other' includes: deflected at triage, left with advice at triage, referred to own dentist, police custody, residential home and other. 'Other hospital' includes: other hospital and emergency hospital transfer.

## ASSAULT ATTENDANCES

Between October 2014 and September 2015 there were 1,690 assault attendances to the ED and UCCs. The month with the highest number of assault attendances (165) was August 2015 (figure 3).

**Figure 3: ED and UCC assault attendances by gender and month, October 2014 to September 2015**



Over seven in ten (72%) assault attendees were male (n=1,215; figure 3), just over half (51%) were aged between 15 and 29 years (n=859) and just over two in five (41%) aged between 30 and 59 years (n=700; table 4).

**Table 4: ED and UCC assault attendances by age group and month, October 2014 to September 2015<sup>1</sup>**

Age group	Oct	Nov	Dec	Jan	Feb	Mar	Apr	May	Jun	Jul	Aug	Sep	Total	%
0-4	0	0	0	0	0	0	0	0	0	0	0	0	0	0%
5-14	<10	<10	***	<10	<10	<10	***	<10	<15	<15	<10	<15	93	6%
15-29	72	86	51	76	64	68	77	86	62	62	92	63	859	51%
30-59	63	53	67	56	68	66	53	60	64	51	62	37	700	41%
60 plus	***	***	***	***	***	***	<10	***	***	***	***	***	38	2%
<b>Total</b>	145	150	126	140	141	147	139	156	138	130	165	113	1690	100%

The assault location is shown in table 5. Between October 2014 and September 2015, just under a quarter (24%) of assaults occurred in a public place (n=398), followed by 10% which occurred in pub/club/bar (n=162) and 8% which occurred in 'other' locations (n=137).<sup>3</sup>

**Table 5: ED and UCC assault attendances by incident location and month, October 2014 to September 2015<sup>1</sup>**

Incident location	Oct	Nov	Dec	Jan	Feb	Mar	Apr	May	Jun	Jul	Aug	Sep	Total	%
Unknown	39	59	50	60	63	63	79	92	84	80	101	81	851	50%
Public place	46	56	40	35	39	40	31	30	19	18	31	13	398	24%
Pub/club/bar	19	11	17	22	16	19	13	<10	8	13	12	***	162	10%
Other	26	14	<10	<10	11	13	7	9	20	10	***	8	137	8%
Home	10	***	10	12	<10	<10	<10	13	***	***	<10	5	91	5%
Work	***	<10	***	***	***	***	***	***	***	<10	10	***	49	3%
Hospital	***	0	0	0	0	0	0	0	0	0	0	0	***	0%
Educational establishment	***	0	0	0	0	0	0	0	0	0	0	0	***	0%
<b>Total</b>	<b>145</b>	<b>150</b>	<b>126</b>	<b>140</b>	<b>141</b>	<b>147</b>	<b>139</b>	<b>156</b>	<b>138</b>	<b>130</b>	<b>165</b>	<b>113</b>	<b>1690</b>	<b>100%</b>

Table 6 displays the disposal method of assault attendees in between October 2014 and September 2015. Forty five per cent of attendees required follow-up treatment (n=753), while 39% were discharged from hospital with no follow-up treatment required (n=665). Eight per cent of assault attendees were admitted to hospital (n=133).

**Table 6: ED and UCC assault attendances by disposal method and month, October 2014 to September 2015<sup>1</sup>**

Disposal method	Oct	Nov	Dec	Jan	Feb	Mar	Apr	May	Jun	Jul	Aug	Sep	Total	%
Follow-up	58	63	58	78	66	60	69	73	54	56	70	48	753	45%
Discharged	59	63	46	55	49	72	48	53	55	54	62	49	665	39%
Other	12	12	12	<10	11	6	13	15	15	12	19	<10	139	8%
Admitted	16	12	10	***	15	9	9	15	14	8	14	<10	133	8%
<b>Total</b>	<b>145</b>	<b>150</b>	<b>126</b>	<b>140</b>	<b>141</b>	<b>147</b>	<b>139</b>	<b>156</b>	<b>138</b>	<b>130</b>	<b>165</b>	<b>113</b>	<b>1690</b>	<b>100%</b>

<sup>3</sup> Fifty per cent of assaults had an 'unknown' location due to poor data collection by the East Lancashire Hospitals Trust. Assault location data has been collected from December 2013.